



# TALLUS RIDGE

## AT SHANNON LAKE

Stage 9 Mountain Side  
This is not an offering for sale info-only

[WWW.TALLUSRIDGE.COM](http://WWW.TALLUSRIDGE.COM)



## COME HOME TO TALLUS RIDGE

- Over 3km of walking trails amongst the splendor of natural, old forest
- Vibrant neighborhoods where each home has a unique look and design
- Close to schools and stores
- Spacious lots between 0.15 - 0.50 acres
- Use your own Builder







## THE FASTEST GROWING, PREMIER FAMILY NEIGHBORHOOD

“ My family loves living in Tallus Ridge; we aren't far from anything yet we enjoy the natural space and great neighbors that make home feel like a sanctuary. ”





- Iron Post Found
- Iron Post Set

All distances are in metres and decimals thereof.

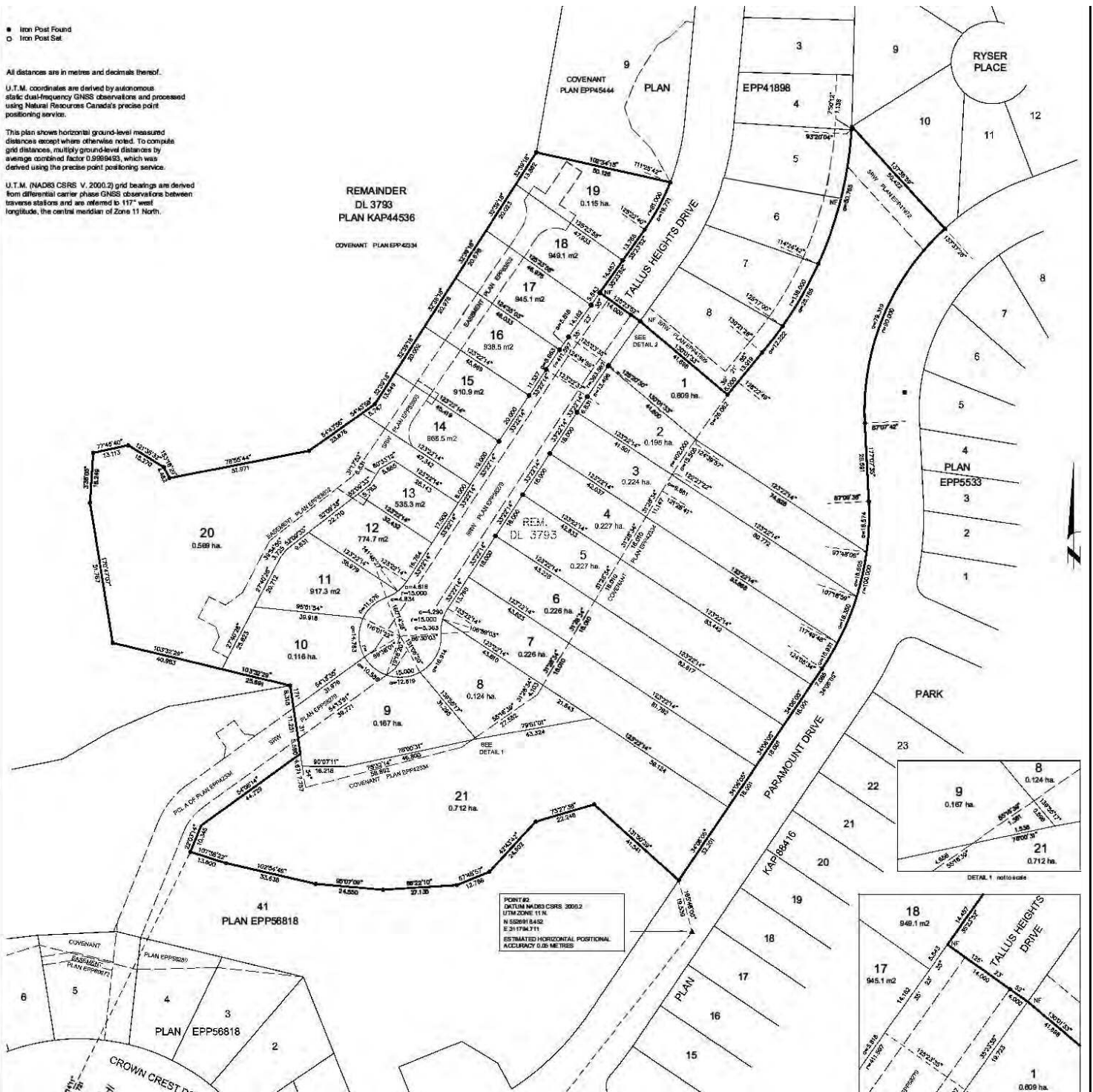
U.T.M. coordinates are derived by autonomous static dual-frequency GNSS observations and processed using Natural Resources Canada's precise point positioning service.

This plan shows horizontal ground-level measured distances except where otherwise noted. To compute grid distances, multiply ground-level distances by average combined factor 0.9999493, which was derived using the precise point positioning service.

U.T.M. (NAD83 CSRS V. 2000.2) grid bearings are derived from differential carrier phase GNSS observations between traverse stations and are referred to 117° west longitude, the central meridian of Zone 11 North.

REMAINDER  
DL 3793  
PLAN KAP44536

COVENANT PLAN EPP4238



Please Note this is subject to change



Lot #	Acres	Prices + G.S.T.	
1	1.5	\$319,999	Pending
2	0.48	\$324,999	Pending
3	0.55	\$349,999	
4	0.56	\$349,999	Pending
5	0.56	\$319,999	
6	0.56	\$314,999	
7	0.56	\$314,999	
8	0.31	\$334,999	
9	0.33	\$334,999	
10	0.29	\$274,999	
11	0.23	\$279,999	
12	0.19	\$269,999	
13	0.13	\$254,999	
14	0.21	\$259,999	
15	0.23	\$264,999	
16	0.23	\$269,999	
17	0.23	\$269,999	
18	0.23	\$264,999	
19	0.28	\$274,999	
20	1.4	\$429,999	Pending





## Tucked away, yet close to it all

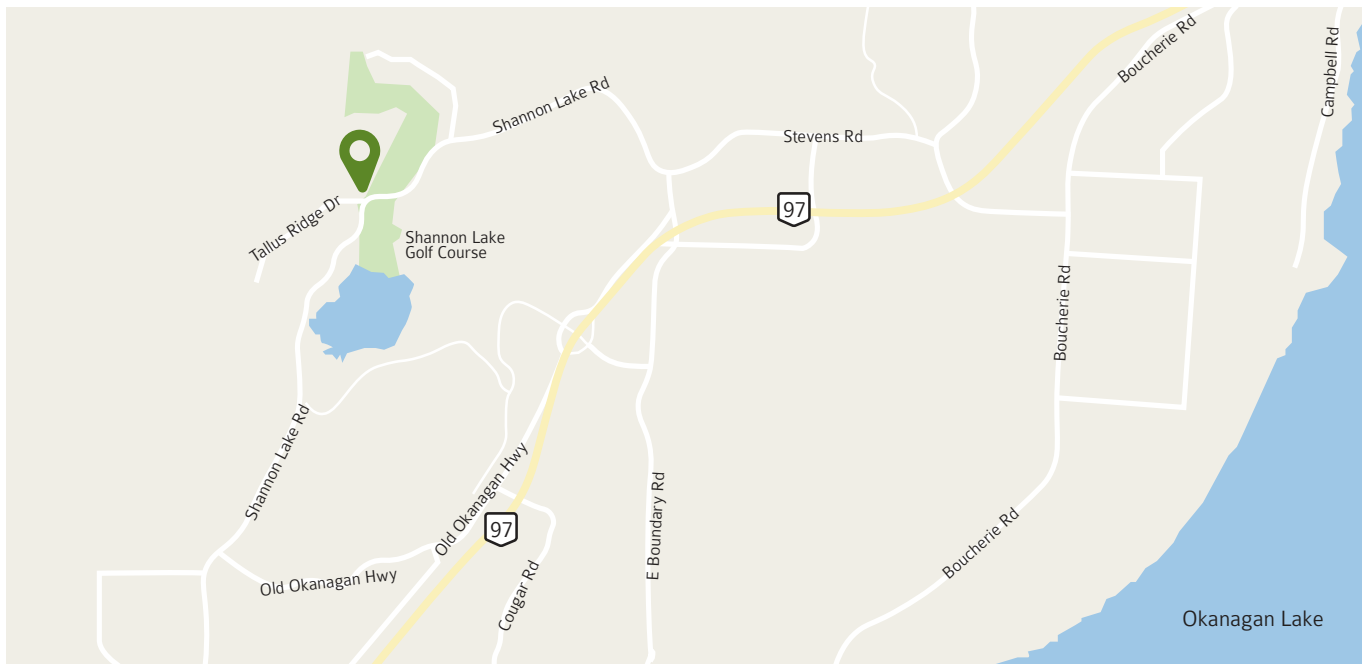
Mar Jok Elementary School	10 min
Constable Neil Bruce Middle School	5 min
Mount Boucherie Secondary School	5 min
2 Golf Courses	2 - 5 min
6 Wineries	4 - 10 min
Downtown West Kelowna	5 min
Super Centers	5 min
Jim Lind Arena	5 min
Okanagan Lake	10 min
Downtown Kelowna	15 min
Kelowna International Airport	30 min

[www.tallusridge.com](http://www.tallusridge.com)









## TALLUS RIDGE AT SHANNON LAKE

[www.tallusridge.com](http://www.tallusridge.com)  
250.469.4004

**POINTS WEST**  
REALTY GROUP  
The right direction in real estate..

Points West Realty Group  
Ryan Mayne

#204-1505 Harvey Avenue  
Kelowna, BC V1Y 6G1  
250-860-0303

Ryan Cell - 250-469-4004